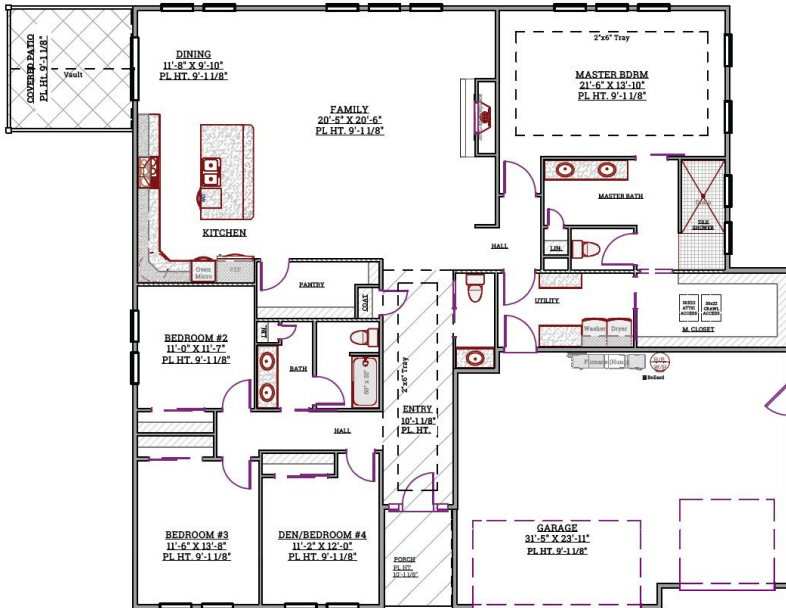




## The Ilana

Welcome home to the plan you've been looking for!

- Spacious great room looking out over the covered patio
- Split bedrooms
- Luxurious master suite
- Nice size bedrooms
- Built to new energy codes



## PROPERTY FEATURES

- 2630 Square Feet
- 4 Bedroom plus Office Space
- 2.5 Bathrooms
- 3-Car Garage
- Great Location with Walking Distance To Columbia River & Trails

## JOHN & BARB KELTCH

509.727.1001 | 509.727.1002

jbkeltch@windermere.com

barbk@windermere.com

homesanytyme.com/santillanhomes

